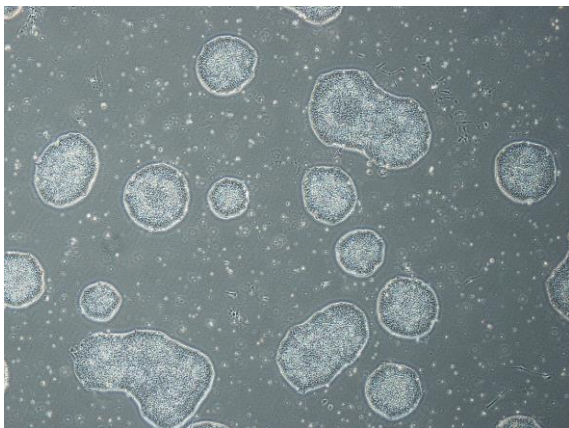
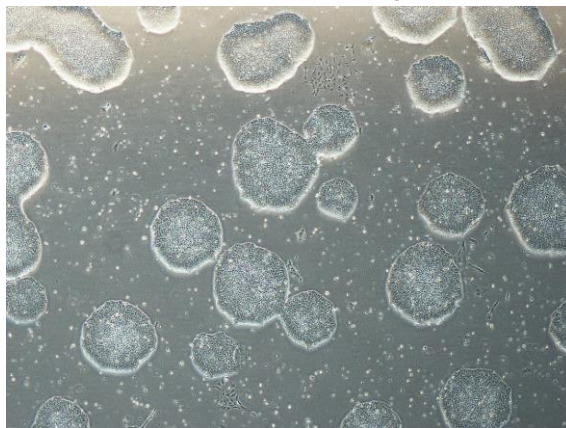


【 CiRA-j-1027 】 Morphology of iPSC colonies

CiRA-j-1027-A: passage-3



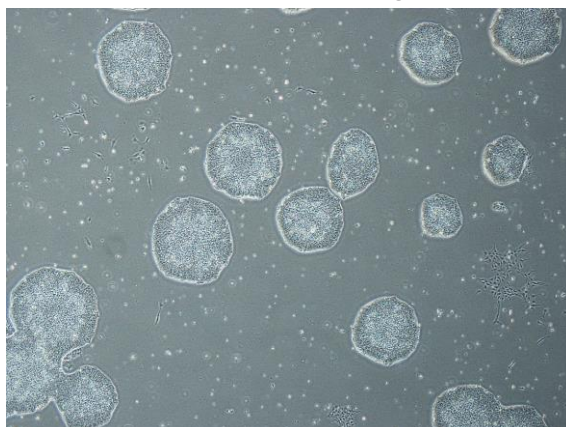
CiRA-j-1027-B: passage-3



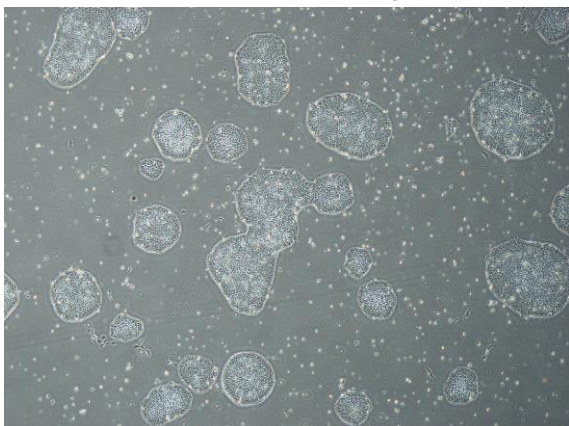
CiRA-j-1027-C: passage-3



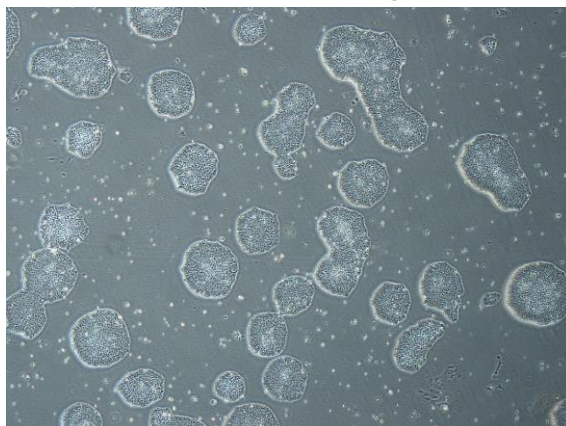
CiRA-j-1027-D: passage-3



CiRA-j-1027-E: passage-3



CiRA-j-1027-F: passage-3



(All images were captured at 4x magnification)